



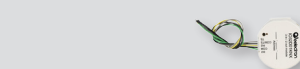
OTOMO
OPEN SPACE TECHNOLOGY

More comfort, higher energy efficiency, scalability, sustainability for a better quality of life.

commercial building

Eelectron KNX building automation integrates functions from micro to medium-large buildings: commercial, offices, museums, public buildings. The system offers **automatic management** and guarantees **continuous integrated control**, lowering energy costs and improving efficiency. In addition to that increases **comfort** and **safety of the occupants** and improve **quality of life**.

KNX Bluetooth



Inwall 3 inputs /2 outputs module

F_Series DIN Rail Universal Modules Plus
[with & without SD card]

4 - 8 - 12 - 16 **inputs / outputs**
4 - 8 - 12 - 16 - 24 **outputs**
DIN module 16 **digital inputs**

K_Series DIN Rail Universal Modules
Serie K
4 - 8 - 12 outputs

Actuators
[Inputs - Outputs]

Push Button Interfaces



Push Button Interfaces
2 - 4 - 6 Inputs / 4 - 2 outputs Led
Analog / Digital Module 8 IN / 4 Led OUT - 4 Thermostats



Dimmers

1 Channel x 700 W (master & slave)
2 or 4 Channels x 300 W
4 Channels LED / RGB W
4 Channels 1-10 V

Gateway KNX



Presence Detectors and multisensors



DALI Gateway
DALI Gateway Tunable White
DMX Gateway

Multi.Sensor Range Presence Detectors
Basic
Standard with lighting control
Multi.Sensor - lighting control, temperature, humidity, sound sensor
High Bay with lighting control
Space.Sensor with lighting control, temperature, humidity, sound sensor, occupancy and activity function
BLE.Sensor with lighting control, temperature, humidity, sound sensor, occupancy, activity function and BLE beacon

Wide Range with lighting control
Corridor with lighting control
Plugin Sensor - CO₂ + temperature
Plugin Sensor - VOC + eCO₂ + temperature



Energy Meters



Climate Control



Electrothermal valves module 4-8 channels
Fancoil Controller 0-10 V
Universal Fancoil Controller 0-10 V
Valves / Loads Actuator 8 inputs / 4+4 outputs
Motorised valve drive

System Components & Interfaces



Power Supply 640 mA
Power Supply KNX 1280 mA
USB Module
KNX IP Interface secure
IP Router-KNX Secure Interface
Line coupler KNX
Time/astronomical Master



OTOMO System Components

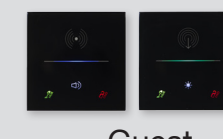


Bluetooth

DALI Module 2 ch. x 8 ECG Broadcast
4 IN + 0 OUT
4 IN + 1 OUT
4 IN + 2 OUT
Brightness & temperature sensor
Presence & light sensor 2 channels
Gateway OTOMO-KNX
Gateway OTOMO-IP-MODBUS
OTOMO App
Beacons

e-Suite GRMS

Software for hotel management, for the supervision of KNX environments and for access and alarm control



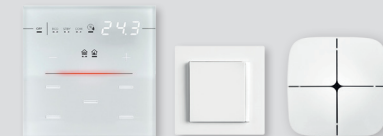
Guest Access Control



Weather Station



Touch Panels
Touch Panel 3,5"
IP Touch Panel 5"
IP Touch Panel 8"



controls and design buttons



Supervision

Dashboarding Platform
Virtual Badge



Horizone & Horizone mini supervision webserver for Building & Home Automation

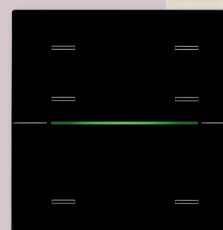
9025 | capacitive switches up to 10 ch.
3025 | 55 X 55 mm switches - 4 ch.
eelecta | MiniPad - 4 or 8 ch. version

healthcare

Connected room automation to make daily life easier for patients and personnel.

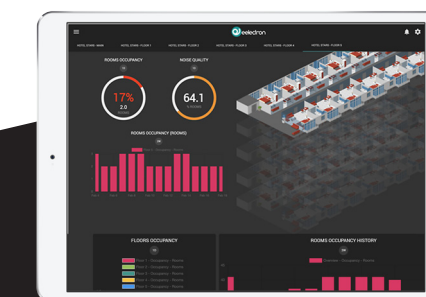
Health sector requires **comfort at any day and any time in each area for the patients** and optimum operational conditions for care-staff and personnel.

The aim is to increase the safety and organize the hospital and clinics processes cost-efficiently, thanks to our **building automation technology**.



Unique experience for guests & staff.
Highest standards ever, as a must.

hospitality

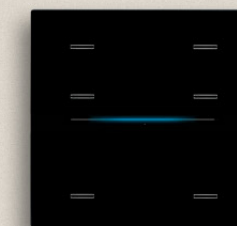


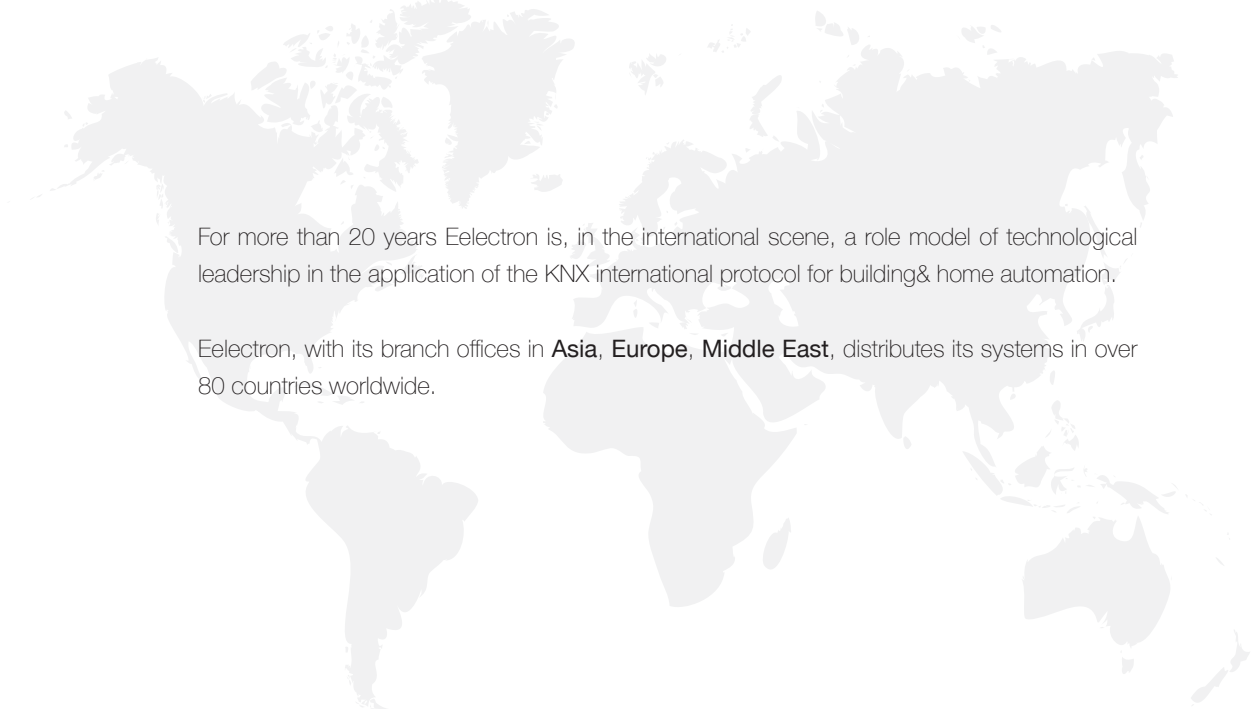
- exceptional guest experience through **Usability, Comfort & Design**
- delivery of quality service through **profitable Operational Efficiency and Integration**
- competitive, reliable and **scalable solutions** for operators while preserving investment over building lifecycle

residential

Automate the functions of a residential building to improve **comfort, safety** and **ease of use**; future-oriented also to maintain value over the time, contributing to **environmental sustainability** and better **enjoyment of your home**.

Benefits of a smart home: comfort and energy savings.





For more than 20 years Eelectron is, in the international scene, a role model of technological leadership in the application of the KNX international protocol for building& home automation.

Eelectron, with its branch offices in **Asia, Europe, Middle East**, distributes its systems in over 80 countries worldwide.



Cooperation & early engagement



Project and solution pre-sales assistance



Multilingual Technical Support



Post sales extensions and upgrades



Virtual and on site trainings, documentation, ...



BRIGHTNESS
CONTROL



CONSTANT
DIMMING



HUMAN CENTRIC
LIGHTING



PRESENCE
DETECTION



HVAC
CONTROL



BLINDS AND
SHADES CONTROL



ENERGY CONSUMPTION
MONITORING



AIR
QUALITY



CONFIGURABLE
SMART LOGICS



SUPERVISION



INTEGRATION



REMOTE
CONTROL



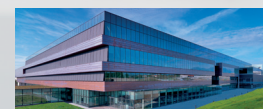
BOCCONI UNIVERSITY
MILAN - ITALY



HOTEL SOFITEL
SINGAPORE CITY CENTER -
SINGAPORE



IRIS BLUE TOWER
DUBAI - UNITED ARAB EMIRATES



DIESEL SPA HEADQUARTER
BREGANZE (VI) - ITALY



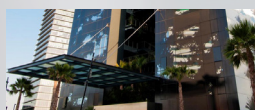
CHARMING FOX SAMUI
KOH SAMUI - THAILAND



TEMPLER VILLA
KUALA LAMPUR - MALAYSIA



ARPA HEADQUARTER
FERRARA - ITALY



HOTEL CATALONIA FIRA
BARCELONA - SPAIN



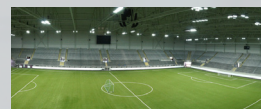
URBAN LIGHTING
BELLINZONA - SWITZERLAND



LS PLATOU CLARKSON
OFFICES
OSLO - NORWAY



VAN DER VALK HOTEL
HEERLEN
HEERLEN - NETHERLANDS



INDOOR STADIUM
TALLIN - ESTONIA



ORMISTON JUNIOR
COLLEGE
AUCKLAND - NEW ZEALAND



SOFIA HOTEL BALKAN
SOFIA - BULGARIA



GORANI PALACE
MILAN - ITALY

Building & Home evolution

Building & Home evolution

Eelectron® is an **Italian company** that manufactures and sells electronic hardware and software devices on **KNX and Bluetooth standards**, in over 80 Countries.

Eelectron's product range addresses **commercial building, healthcare, hospitality, and home evolution** sectors.

Member of the KNX association in the manufacturers category since 2005, Eelectron® represents an example of technology leader in the application of the common standard protocol.

Eelectron's philosophy of comprehensive **aesthetic design** and engagement in developing highly innovative devices combines with KNX interoperability and compliance with the most stringent international quality standards has engendered Eelectron's distinct reputation.

Thanks to the **easy use** and installation, optimal functionality, high technological content and Italian design that offers customization options, **Eelectron® products are the privileged choice in the most ambitious projects**.



Eelectron spa
Via Monteverdi 6 | 20025 Legnano (MI) - Italia
Tel: +39 0331 600802
Email: info@eelectron.com
Web: www.eelectron.com



Eelectron SpA is a KNX certified training center:
accredited by the KNX Association for the organization
of basic, advanced and HVAC courses.



empowering user experience

continuous modernization